

## Menara Milenium

---

### DETAILS

Location: **Damansara Heights**

Rental Rate (Min) **RM 5.50 per sq. ft.**

Typical Floor Area (Min) **3,000 sq. ft.**

Typical Floor Area (Max) **22,000 sq. ft.**

---

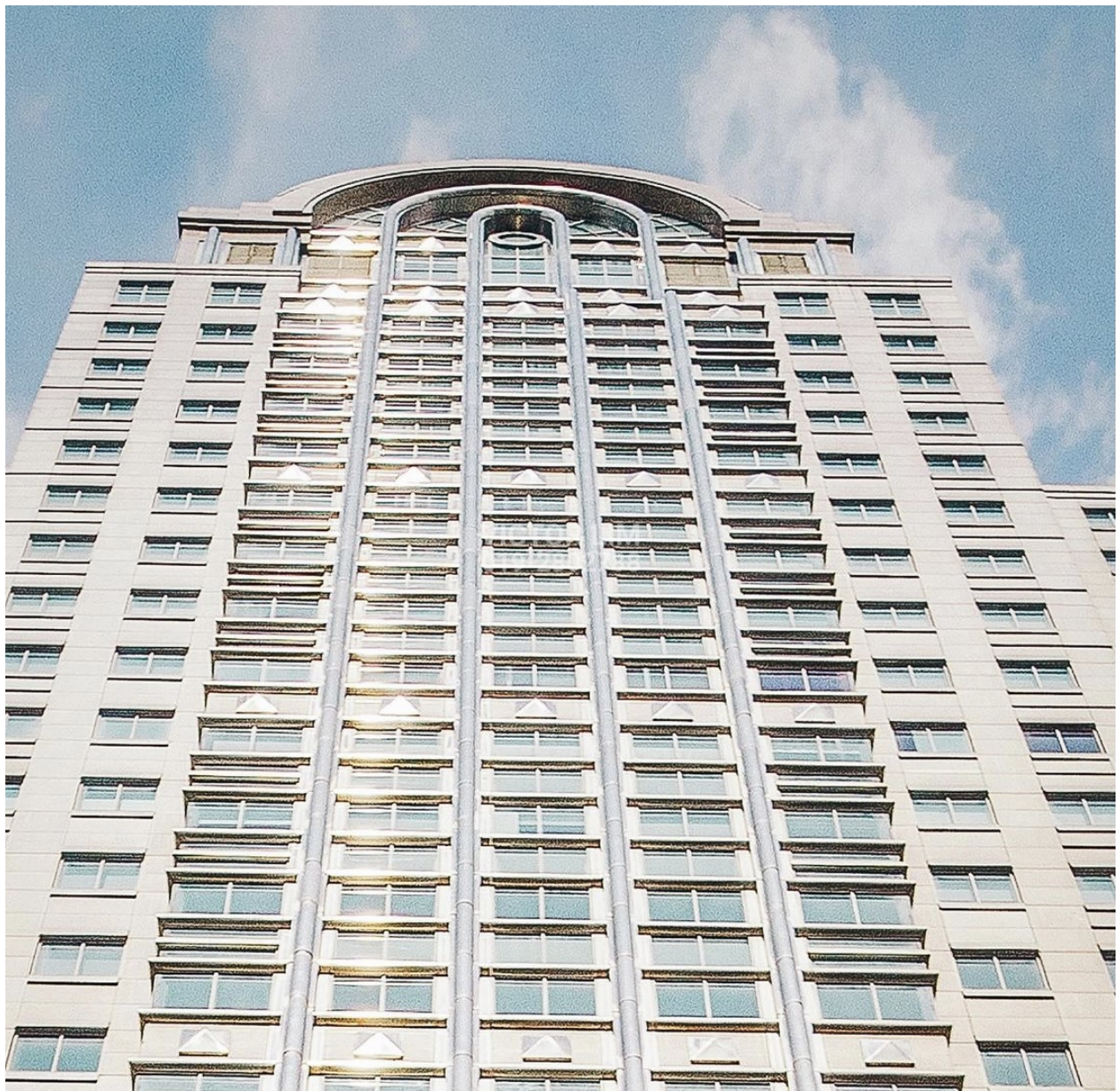
### KEY FEATURES

- 25 storey grade A office building
  - Refurbishment completed in 2022
  - Total net lettable area 559,000 sq. ft.
  - Typical floor area 22,500 sq. ft.
  - Office unit size from 3,000 sq. ft.
  - Over 2,400 parking spaces
  - Conveniently access to 2 MRT stations
  - On-site medical clinic, food court
  - Adjacent to DC Mall & Pavilion DH
  - Next to Sofitel KL Damansara
  - Preferred corporate address
- 

### GOOGLE MAP

Click [HERE](#) to link to google map

## GALLERY









VICTOR LIM  
019-2802780



